



# Redefine the Way You Communicate

INTRAORAL CAMERA FAMILY



# Case Acceptance Starts with an Image

Carestream Dental intraoral cameras are leading the way to improved diagnostic capabilities and patient education. They are also redefining the way you communicate: high-quality images enable your patients to better understand their clinical situation and help you clarify case details with insurance companies. These intraoral cameras provide the powerful visual evidence you need to get the treatment process started.



# CS 1500 Intraoral Camera

Available in both wired and wireless models, the CS 1500 gives you the high-resolution images you need—from portrait to macro views—to diagnose, plan treatment and start the conversation.

- True liquid lens autofocus
- 8-LED auto-adjusting lighting system
- Focus range of 1mm to infinity
- Image or video capture capability

Wired version connects via USB; wireless version supports AV, VGA and S-video connections.

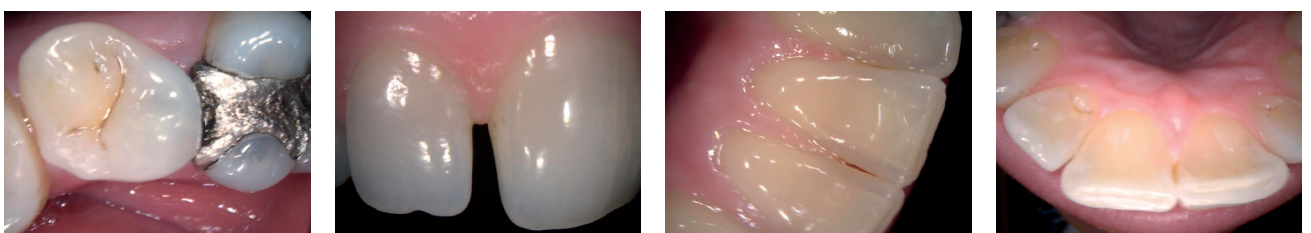
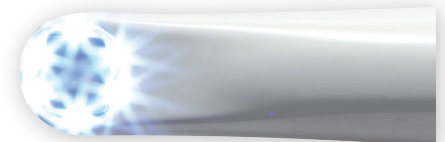


High quality images in a wide range of views.

# CS 1200 Intraoral Camera

Combining high-quality images, ease of use and easy sharing, the CS 1200 is the perfect entry level intraoral camera option. It features an auto-adjustable, 6-LED lighting system and a generous 3mm-25mm focus range.

- Stores up to 300 images
- Eliminates the need for memory cards or computers in each operatory



High quality images capture cracks, caries and other anomalies.

# Which Camera is Right for You?

- Wired or wireless for the ultimate in mobility
- Simple to share with multiple connection methods, including USB, S-Video, AV and Wi-Fi\*\*
- Easy to integrate with your current imaging software, thanks to TWAIN compliance
- Straightforward to learn and use with: one-click image capture buttons; rounded heads/tapered shapes; and an ergonomic, lightweight hand piece for right- and left-handed users
- Powerful and persuasive with highresolution (1024 x 768), true-to-life color images and wide focus range

Feature	CS 1500	CS 1200
Still image resolution	1024 (H) x 768 (V)	1024 (H) x 768 (V)
Video resolution	640 x 480	640 x 480
Focus range:	1mm to infinity	3mm to 25mm
Portrait images	Yes	No
Autofocus	Yes, liquid lens	No, fixed focus
Connection	USB (direct to PC) S-video (direct to monitor)* AV (direct to monitor)* VGA (direct to monitor)*	USB (direct to PC)
Display	PC, Video monitor	PC, Video monitor
Wireless (Wi-Fi) option	Yes	No
Illumination system	8 LEDs	6 LEDs

\*Only available with wireless camera.



Save the image to your computer or SD card.

For more information, email [info.emea@csdental.com](mailto:info.emea@csdental.com) or visit [carestreamdental.com](http://carestreamdental.com), [Carestreamdental.co.uk](http://Carestreamdental.co.uk).



Carestream Dental EMEA • Carestream Dental UK

@carestreamdental.emea • carestreamdental.uk